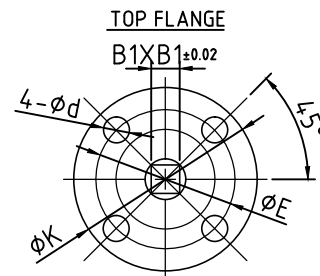


8	PIN	SS410/SS304	1
7	GEAR	CAST IRON	1
6	O-RING	NBR	1
5	BUSHING	P.T.F.E.	4
4	STEM	SS410	1
3	SEAT	NBR / EPDM	1
2	DISC	STAINLESS STEEL	1
1	BODY	DI	1
NO.	PARTS NAME	MATERIAL	QTY
TEST PRESSURE	SHELL		SEAL
	HYDROSTATIC		225PSI
	AIR		165PSI



Unit: inch

SIZE	A	B	C	D	d0	ISO5211	K	E	4-d	L	D1	4-Ød1	8°	B1
2	6.34	3.15	1.65	2.08	0.50	F05	2.56	1.97	.275	1.06	4.75	4-0.75	90	0.43
2.5	6.89	3.50	1.77	2.54	0.50	F05	2.56	1.97	.275	1.06	5.5	4-0.75	90	0.43
3	7.13	3.70	1.78	3.10	0.50	F05	2.56	1.97	.275	1.06	6.0	4-0.75	90	0.43
4	7.87	4.49	2.05	4.09	0.62	F07	3.54	2.76	.39	1.18	7.5	4-0.75	45	0.43
5	8.50	5.00	2.14	4.85	0.75	F07	3.54	2.76	.39	1.18	8.5	4-0.88	45	0.55
6	8.89	5.47	2.19	6.11	0.75	F07	3.54	2.76	.39	1.18	9.5	4-0.88	45	0.55
8	10.24	6.89	2.38	7.97	0.87	F10	4.92	4.02	.47	1.50	11.75	4-0.88	45	0.67
10	11.49	7.99	2.58	9.86	1.12	F10	4.92	4.02	.47	1.58	14.25	4-1	30	0.87
12	13.27	9.53	3.03	11.87	1.24	F10	4.92	4.02	.47	1.58	17.0	4-1	30	0.87

Drawing Title:
BFV-B-WESG-(SIZE)



Phone #
541.564.7636
Fax #
541.564.6522

Date:
12/21/2018
Drafted By:
AB