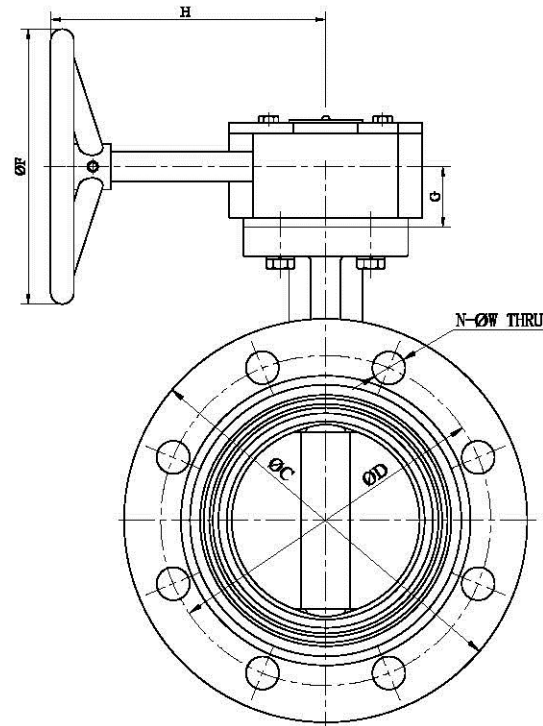
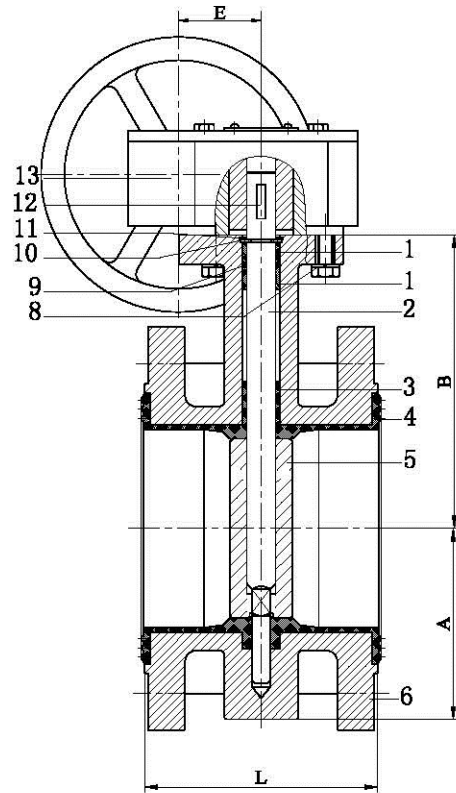




# INDUSTRIAL CHOICE



Size	A	B	CLASS 125			E	ØF	G	H	L
			ØC	ØD	N-ØW					
2"	70	130	152	120.7	4-Ø19	44	135	28	139	108
2.5"	75	140	178	139.7	4-Ø19	44	135	28	139	112
3"	85	150	191	152.4	4-Ø19	44	135	28	139	114
4"	104	160	229	190.5	4-Ø19	44	135	28	139	127
5"	112	180	254	215.9	8-Ø22	44	135	28	139	140
6"	130	200	279	241.3	8-Ø22	44	135	28	139	140
8"	160	230	343	298.5	8-Ø22	62	275	39.5	211	152
10"	194	260	406	362	12-Ø25	62	275	39.5	211	165
12"	220	300	483	431.8	12-Ø25	78	275	40	220	178

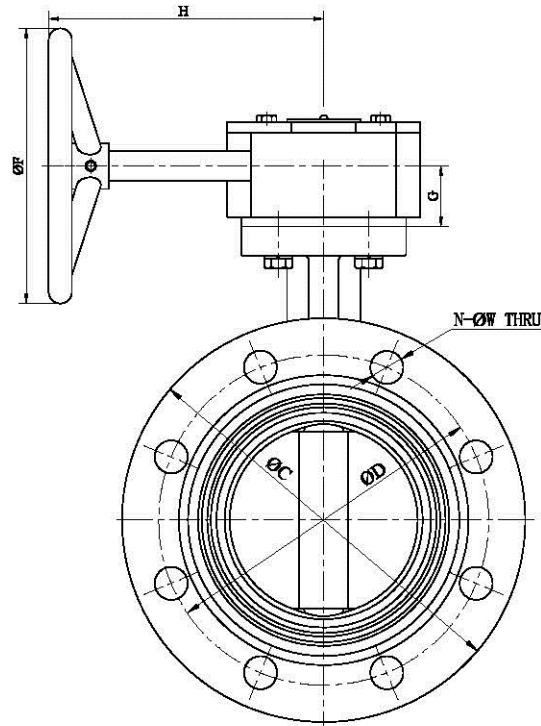
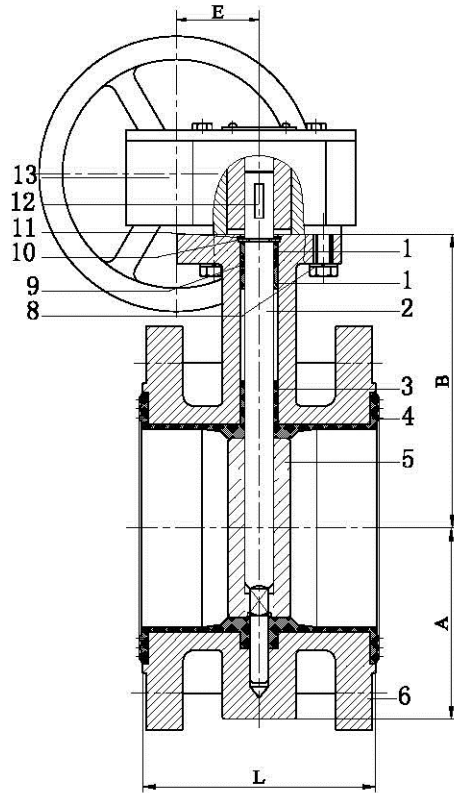
13	Gear Operator		
12	Key	Carbon steel	
11	Circlip	Carbon steel	
10	Thrust Washer	Carbon steel	
9	O-Ring	EPDM/NBR	
8	Bolt	Carbon steel	
6	Body	DI	
5	Disc	SS/DI/DI+NYLON	
4	Seat	EPDM/NBR/VITON	
3	Bushing	PTFE	
2	Stem	SS	
1	Bushing	PTFE	
Item	Description	Material	Remark

2" TO 12"  
Double Flanged Type Butterfly Valve

1:2



# INDUSTRIAL CHOICE



Size	A	B	CLASS 125			E	ØF	G	H	L
			ØC	ØD	N-ØW					
2"	70	130	152	120.7	4-Ø19	44	135	28	139	108
2.5"	75	140	178	139.7	4-Ø19	44	135	28	139	112
3"	85	150	191	152.4	4-Ø19	44	135	28	139	114
4"	104	160	229	190.5	4-Ø19	44	135	28	139	127
5"	112	180	254	215.9	8-Ø22	44	135	28	139	140
6"	130	200	279	241.3	8-Ø22	44	135	28	139	140
8"	160	230	343	298.5	8-Ø22	62	275	39.5	211	152
10"	194	260	406	362	12-Ø25	62	275	39.5	211	165
12"	220	300	483	431.8	12-Ø25	78	275	40	220	178

13	Gear Operator		
12	Key	Carbon steel	
11	Circlip	Carbon steel	
10	Thrust Washer	Carbon steel	
9	O-Ring	EPDM/NBR	
8	Bolt	Carbon steel	
6	Body	DI	
5	Disc	SS/DI/DI+NYLON	
4	Seat	EPDM/NBR/VITON	
3	Bushing	PTFE	
2	Stem	SS	
1	Bushing	PTFE	
Item	Description	Material	Remark

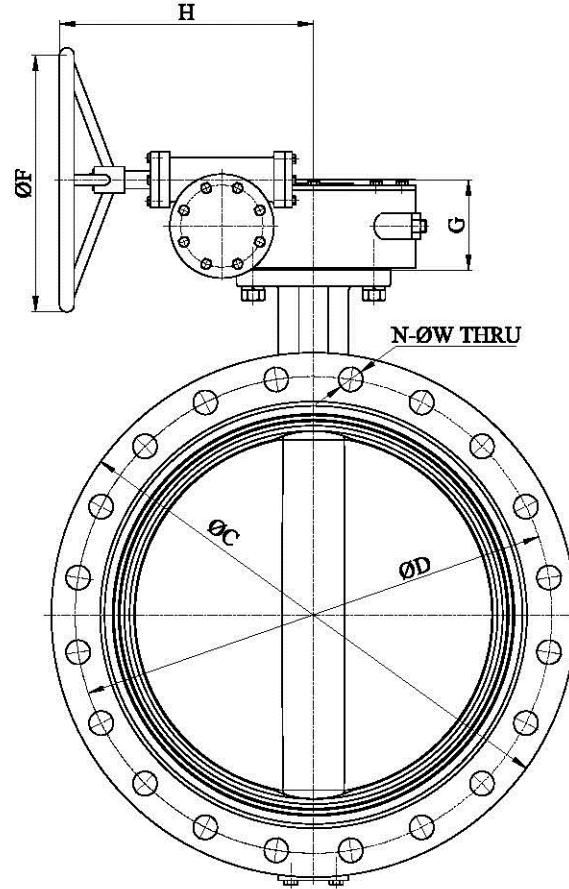
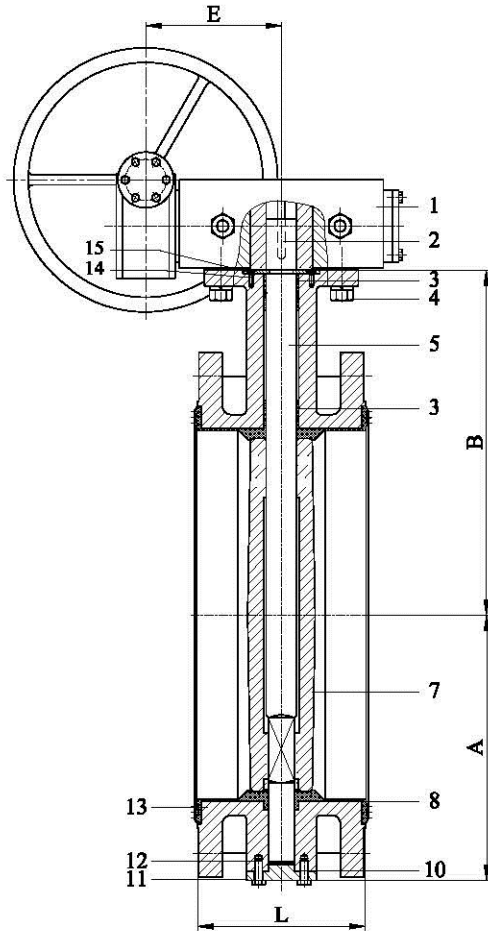
2" TO 12"  
Double Flanged Type Butterfly Valve

1:2



# INDUSTRIAL CHOICE

Size	A	B	CLASS 125			E	ØF	G	H	L
			ØC	ØD	N-ØW					
20"	362	470	699	635	20-Ø32	167	285	116	257	229
24"	415	540	813	749.3	20-Ø35	200	380	131	301.5	267



15	Thrust Washer	Carbon steel	
14	Screw	Carbon steel	
13	Body	DI	
12	Bolt	Carbon steel	
11	End cap	DI	
10	O-ring	EPDM/NBR	
8	Seat	EPDM/NBR/VITON	
7	Disc	SS/DI/DI+NYLON	
5	Stem	SS	
4	Bolt	Carbon steel	
3	Bushing	PTFE	
2	Key	Carbon steel	
1	Gear Operator		
Item	Description	Material	Remark

20" TO 24"  
Double Flanged Type Butterfly Valve

1:5