

# INDUSTRIAL CHOICE



## INDUSTRIAL CHOICE UCET DISCHARGE HOSE

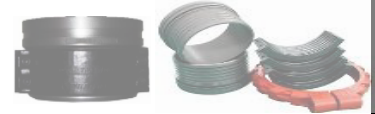
Urethane Covered Epdm Tube High Pull/Tensile Strength Discharge Hose



**Lightweight: Easy to Handle-Move**  
**Durable: Tough Polyurethane Cover**



**Pliable: Expands over most ends.**  
**Strong: High WP/Tensile/Pull Strength.**



**Applications: Water Discharge, Light Water based Chemicals, Chlorine, Alkalizes, Brine Glycols, Ozone See Chemical Chart -40F to 212F. High Tensile Pull Strength for Drag-Line Hose, Linear System Hose, Fracking Supply Hose.**

Item Number	ID (Inch)	Wall Thic	WPSI	BPSI	Tensile Strength	Weight (lbs./ft.)	Notes
UCET-1.5-250BK-200	1.5"	0.069	300	900	13,860lbs	0.195	
UCET-2-250BK-200	2"	0.070	250	750	13,800lbs	0.240	
UCET-2.5-250BK-200	2 1/2"	0.079	250	750	18,920lbs	0.320	
UCET-3-250BK-200	3"	0.087	250	750	29,480lbs	0.400	
UCET-4-200BK-200	4"	0.094	200	600	32,640lbs	0.560	
UCET-6-200BK-200	6"	0.102	200	600	46,200lbs	0.920	
UCET-8-150BK-200	8"	0.122	150	450	42,240lbs	1.630	
UCET-3-250GR-660	3"	0.087	250	750	29,480lbs	0.400	
UCET-4-200GR-660	4"	0.094	200	600	32,640lbs	0.560	
UCET-5-200GR-660	5"	0.010	200	600	35,400lbs	0.740	
UCET-6-200GR-660	6"	0.102	200	600	46,200lbs	0.920	
UCET-8-150GR-660	8"	0.122	150	450	42,240lbs	1.630	
POLYFRAC-10-200GR-660	10"	0.170	200	200	95,460lbs	2.900	

**Note! Dimensions, Weights can vary slightly & are approximate. Wpsi is figured at 78deg F.**

**Warning! Ends attached with bands, clamps or sleeves rated for under Wpsi of hose will lower the overall Wpsi of the hose assembly.**

**Tube: EPDM Rubber**

**Cover: Polyurethane-**

**Reinforcement: 2 Ply High Tensile Strength Polyester Spirals**

**Temperature Range: -40F to +212F**

**Branded: Industrial Choice UCET Discharge Hose 250-200-150PSI W.P.**